

MIRNU WIRRA / GOLDEN WATTLE PARK / PARK 21W SPORTS HUB



RENDER



PARK 21W LOCATION

GRIEVE
GILLET
ANDERSEN

243 Pirie Street Adelaide
 South Australia 5000
 T +61 8 8232 3626
 admin@ggand.com.au
 ggand.com.au

MIRNU WIRRA SPORTS HUB

COVER SHEET

21152

PROJECT ADDRESS

MIRNU WIRRA / GOLDEN WATTLE PARK
(PARK 21 W)

CLIENT

CITY OF ADELAIDE

SCALE

AS INDICATED @ A3

ISSUE DATE

20/04/2022

REVISION

E

MIRNU WIRRA CONCEPT PLAN



- 01. Park Lands Trail with lighting (3m).
- 02. Existing building removal.
- 03. Upgrade of Park Lands edge planting and urban address.
- 04. Public art integrated with proposed nature play and education hub areas.
- 05. Multi-purpose sports playing fields with lighting shown indicatively (ovals dimensions shown).
- 06. New community sports building (465m²/2 level)
- 07. Earth mounding, viewing area and potential ramp access.
- 08. Existing permeable paths (remove existing lights).
- 09. Informal recreation space with a focus on nature play.
- 10. Existing playspace.
- 11. High biodiversity value area.
- 12. Informal irrigated recreation space with shade and picnic amenities.
- 13. New permeable paths.
- 14. Future signalised pedestrian crossings to connect Park Lands Trail.
- 15. Bush for Life site
- 16. Diagonal promenade with improved lighting (3m).
- 17. Education Hub with interpretative signage.
- 18. Petanque piste and picnic amenities.
- 19. On-street parking.
- 20. Potential site for cultural landscape.
- 21. Re-establishment of the Wattle Grove.
- 22. Exercise loop with distance markers, seating, water fountain and exercise equipment.
- 23. Cricket nets.

REFERENCE IMAGES



LEGEND

- Proposed trees
- Existing trees
- Shelters
- Irrigated turf
- Dry grassland
- Park Lands Trail (with lighting)
- Footpath connections 2.5m wide
- Light poles (ovals)
- Lawn mound
- Playing surfaces
- Playspace
- Removed building
- New building
- Protected conservation zone
- Cricket practice nets

1. EXISTING CLUBROOM TO BE REMOVED
2. DEGRADED EDGE TO PARK LANDS WITH 'GOAT TRACKS'
3. EXISTING PITCHES
4. REMOVAL OF GRAVEL SURFACES AND INFORMAL ACCESS TRACKS EXISTING OVAL
5. NEW LIGHTING COLUMN
6. NEW BUILDING
7. LANDSCAPE MOUND
8. TREES TO BE REMOVED

EXISTING CONDITIONS

TREES FOR REMOVAL



LOCATION PLAN



PRECINCT PLAN

1. MIRNU WIRRA COMMUNITY HUB
2. EXISTING BUILDING REMOVED (DASHED LINE)
3. NEW PLANTING AND FOOTPATH UPGRADE TO PARK LAND'S EDGE
4. LANDSCAPE MOUND AND ACCESS RAMPS AND STAIRS
5. POTENTIAL FOOTPATH CONNECTIONS (EXERCISE TRAIL FUTURE WORKS BY COA)
6. NEW FOOTPATH CONNECTIONS
7. UPGRADED PLAYING FIELDS FUTURE WORKS BY ACSARA)
8. SERVICE ACCESS
9. ON STREET PARKING (ACCESSIBLE)



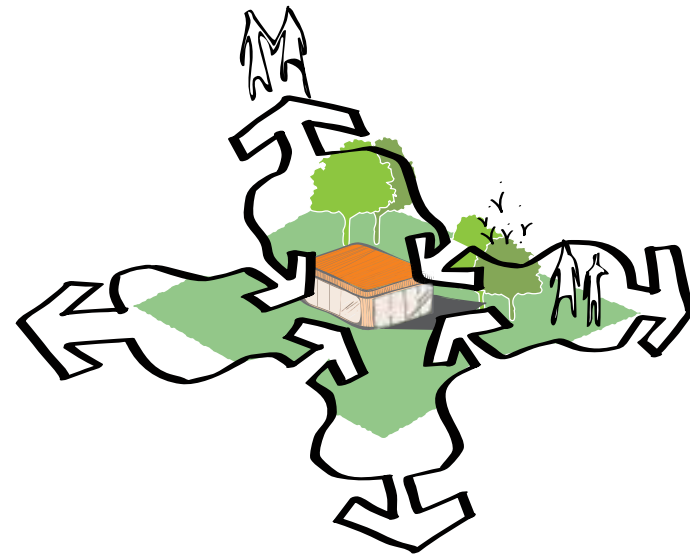


PRINCIPLE ONE

Celebrate the quality, identity and cultural heritage of the Park Lands

The Adelaide Park Lands are the premier greenspace for the city, and as such are a critical life support for the health and well-being of the community. The building and landscape responds to the civic nature of its location via a structured sweeping landscape response and bold architectural expression.

The design and consultation process has been extensive and this has provided a high level of rigour to the layouts and future functionality. The design cleverly manages the demands of operational imperatives with openness, visual delight and low impact approach to the site.

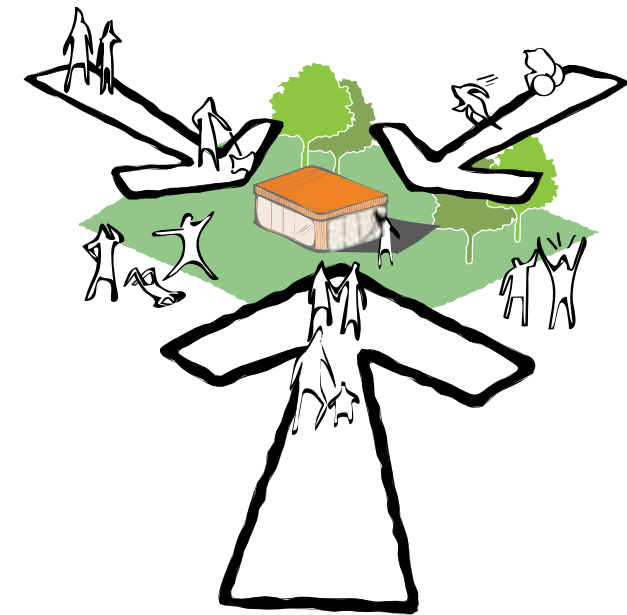


PRINCIPLE TWO

Apply a 'whole-of-park' approach

We have worked with WAX Landscape Architects to undertake broad site analysis and precinct analysis. From this process we have identified existing linkages, pathways and amenities for community use. These existing and desired linkages and movements have been enhanced in the current design.

We have been attentive to the "future vision" covered in documentation and reports of the Adelaide Park Lands from a civic and public realm perspective. The whole of site strategy supports universal access and a variety of activity opportunities for all park users including families, sporting groups, community groups, school groups.



PRINCIPLE THREE

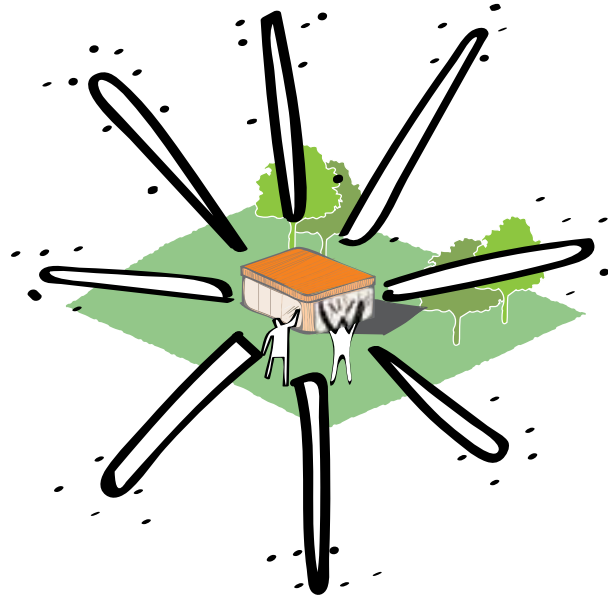
Activate the Park Lands

The proposal enables wider participation in sporting and recreational activities by providing a fit for purpose flexible facility that is accessible to diverse user groups. It also promotes visibility of sporting activities and passive surveillance to support community safety.

The building is visible from the roadway for easy way-finding and visibility. The consolidation of facilities in a two-storey building form has the benefit of creating an activity "node" to encourage community vibrancy and activation.

The project creates "access for all" universal access in a relaxed (ramping) and a structured (lift) manner to enable interaction with diverse users.

Our design process involved consultation with community groups as well as the sporting and recreational groups that currently use the facilities. The greenspace and the building facilities have been designed to maximise the opportunities for diverse usage of the site. For instance the upper level change rooms can be used as "greenrooms" to support performances in the Multipurpose Community Space. The tiered landscape can be used for outdoor learning by surrounding schools.



PRINCIPLE FOUR

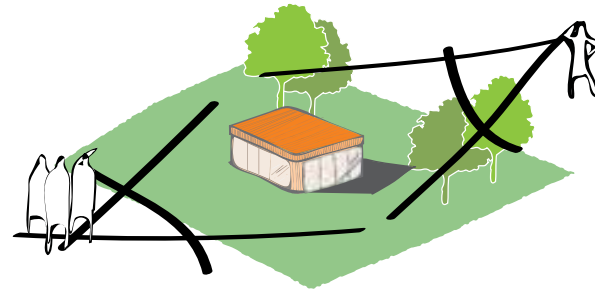
Be design exemplars

Working with the end users, we have developed a compact building footprint that has minimal impact on the existing natural context. The architectural form, materials and detailing respond to the landscape context of the site.

We have considered the capital and operational costs of the project in the materials and detailing development. The building materials we have selected belong to the family of "community use" civic projects but have been used in an elegant and unique and exemplary manner.

The design narrative for the project has been developed from massing and texture studies of the locale. The design aims to be complementary and abstract in its context rather than imitative.

The massing and detailing of the building and landscape considers safety of the park users in the external environment and internal spaces.

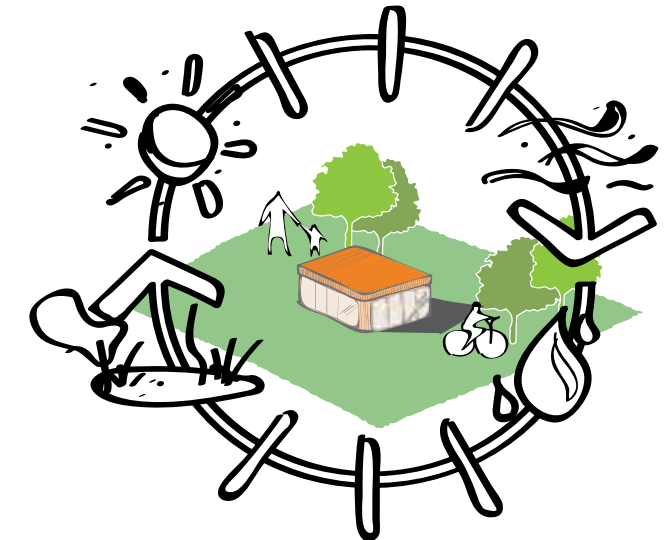


PRINCIPLE FIVE

Balance the visual impact of built form within the Park Lands

The building footprint is conservative for the current and future proposed utilisation. The design manages the compressed footprint and contemplates future flexibility by interlinking spaces visually and physically and co locating storage.

The materials and detailing have been selected to break down the overall size of the building into smaller scale and finer detailed elements that are experienced at closer approach.



PRINCIPLE SIX

Design with sustainability and longevity in mind

The building has been designed with passive principles that will reduce lifetime energy usage. An overhang on the eastern facade has been designed to allow solar penetration into the community space in winter and provide shade in summer. Operable openings allow cross-ventilation of the multipurpose space.

Operational energy consumption will be offset via a concealed PV cell array and battery storage. Rainwater tanks will connect to Glenelg to Adelaide Pipeline for the flushing of toilets. A suitable AC cassette will be provided for the Community Space to manage temperature as required.

The existing facility will be demolished to facilitate the completion of the works. The design will incorporate the safe spoils of demolition to remain on site in mounding and/or landscape features to close the loop on the building lifecycle.

Where possible materials have been selected based on the embodied energy credentials (brickwork and sustainably sourced timber) and/or longevity and serviceability.

The design has minimal external openings to improve security and safety. Vandalism and sleeping rough have been considered and addressed in the design.



BUILDING THE PARK LANDS

- Build on and enhance the character, culture and identity of the Park Lands through design responses that preserve landscapes, open space, character, park edges, views and other landscape features



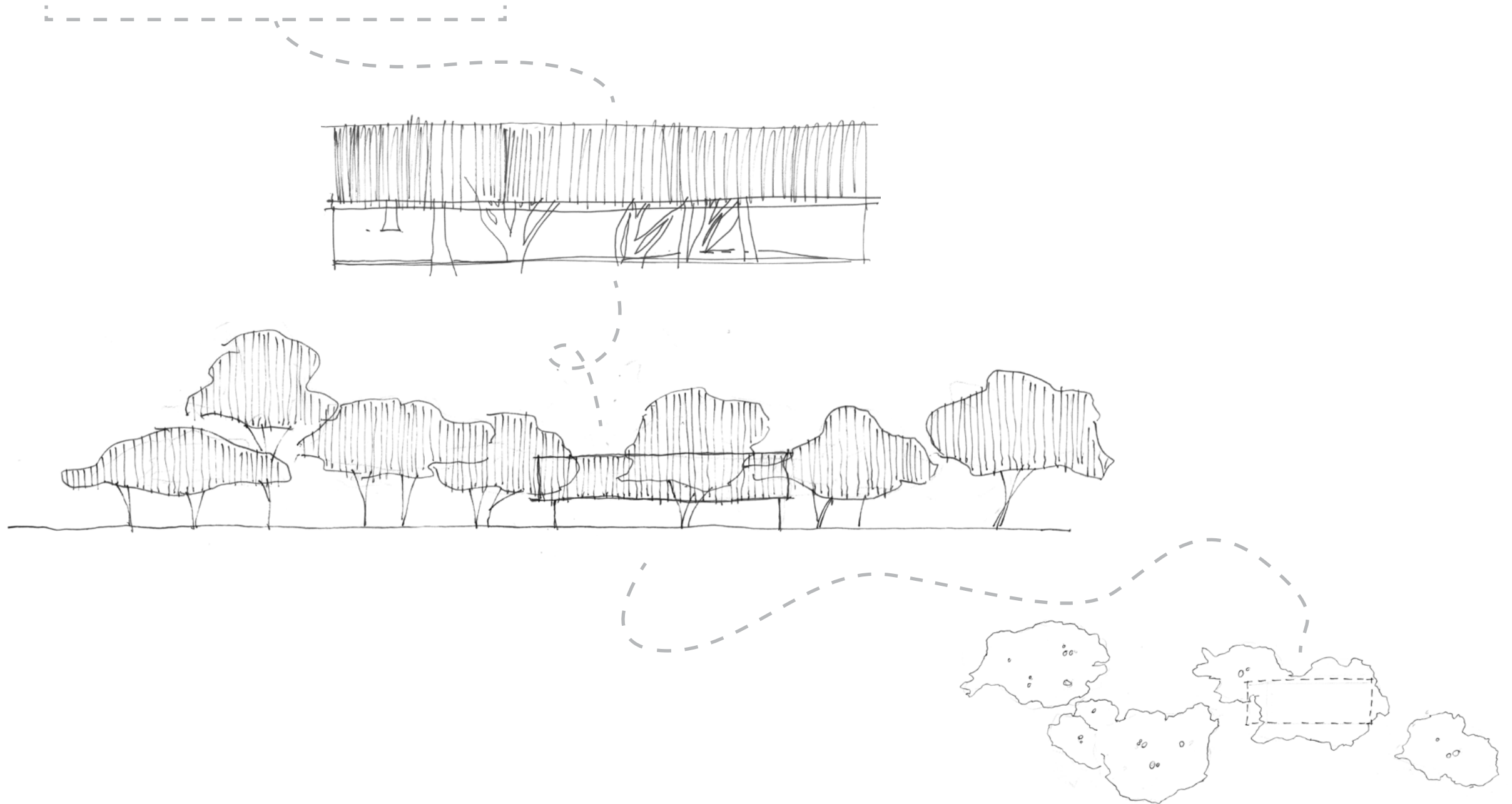
ACCESSIBLE + INCLUSIVE

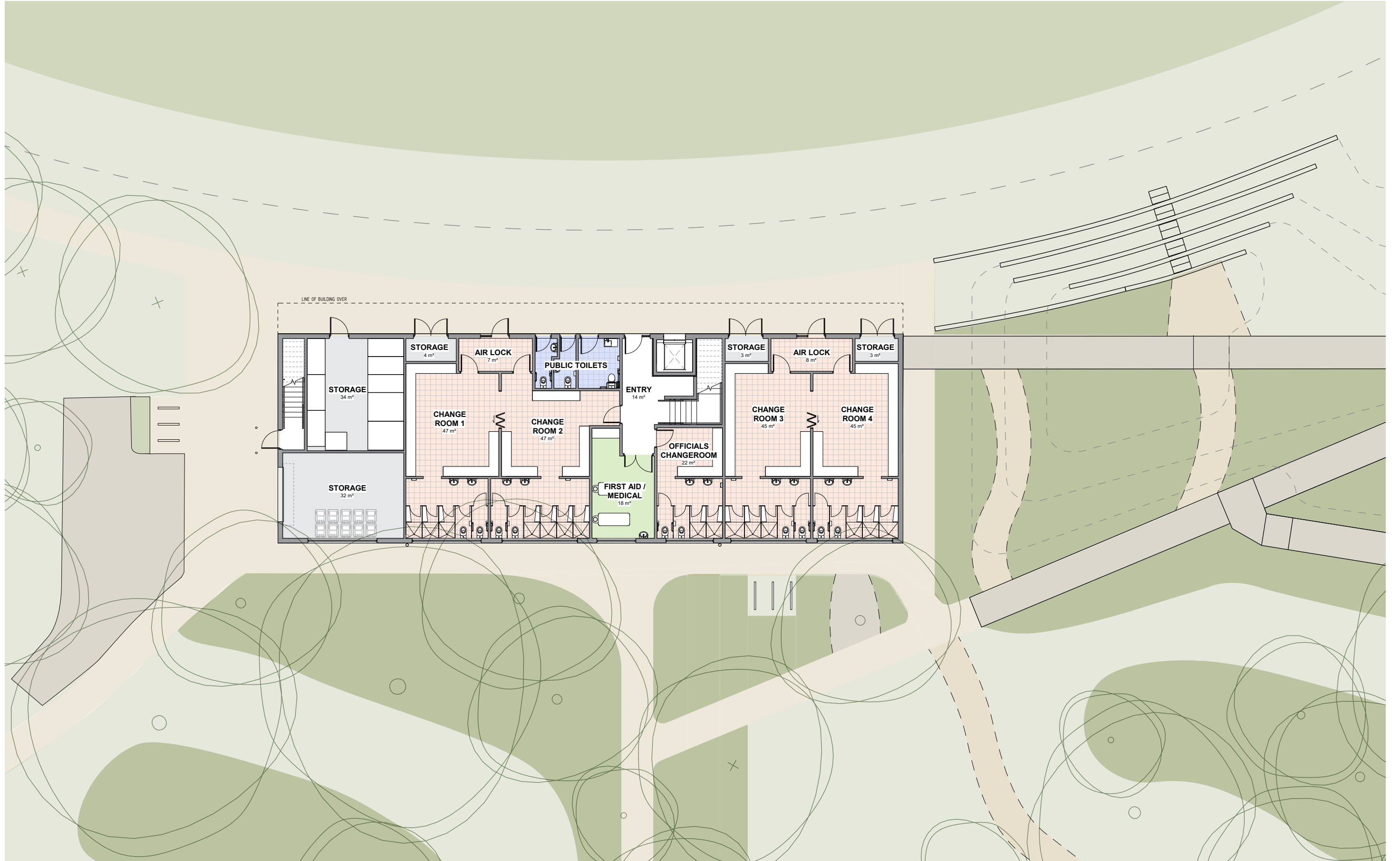
- Increase accessibility for all users, delivering a welcoming recreational environment
- Increase legibility and the sense of arrival to the building and the surrounding open space
- Improve connections to Park Lands trail

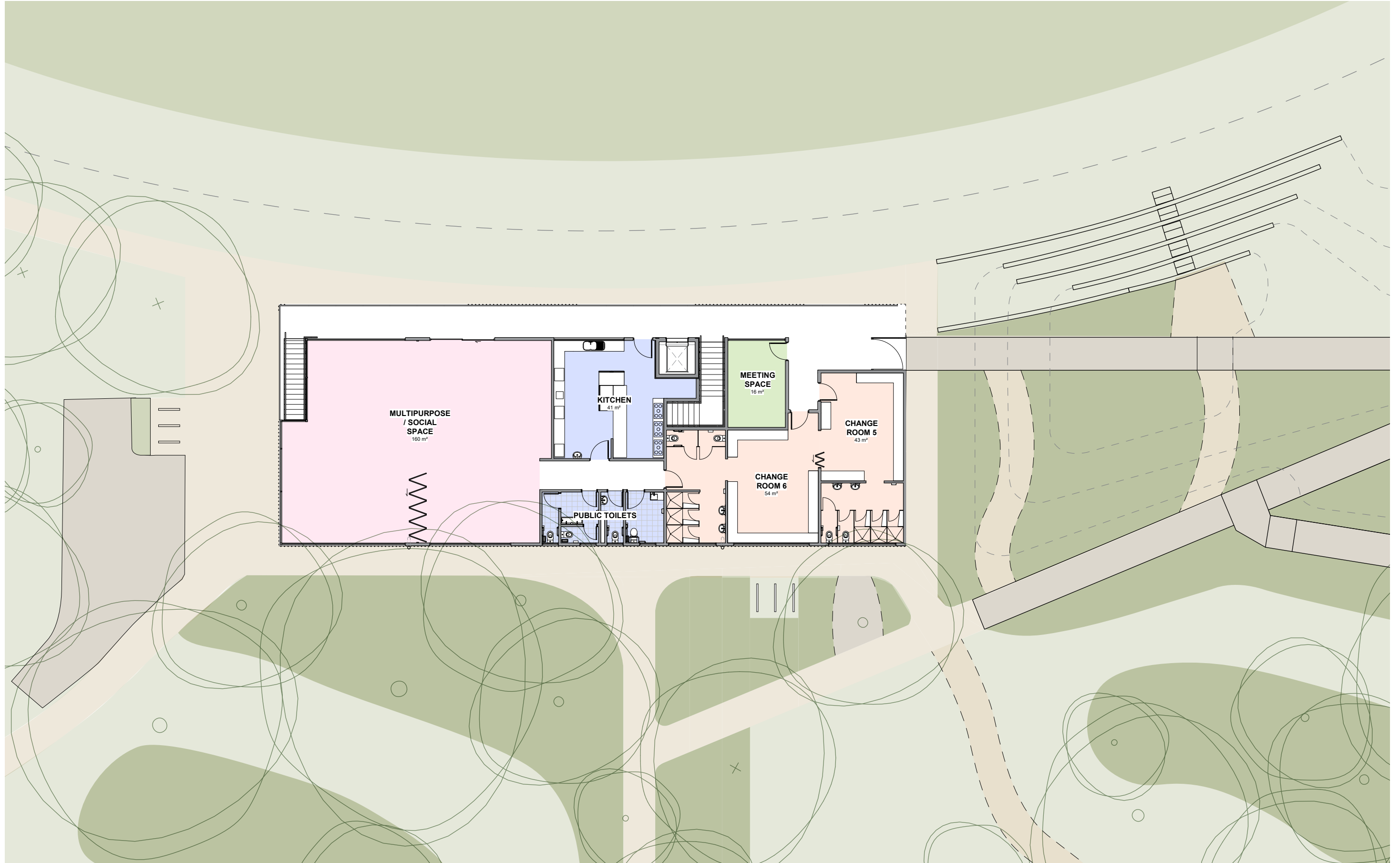


LANDSCAPE INTEGRATION

- Value and express the six principles of the Adelaide Park Lands Building on the Design Guidelines in relation to identity, exceptional design, whole of park approach, visual impact, activation and sustainability
- Integrate WSUD strategies and use of local native plants
- Use robust paving materials that define outdoor areas and enhance connections to the indoor treatments and finishes







MIRNU WIRRA SPORTS HUB BUILDING FIRST FLOOR PLAN 21152

UPPER LEVEL FLOOR AREA
INCLUDING BALCONIES: 465m²

PROJECT ADDRESS
MIRNU WIRRA / GOLDEN WATTLE PARK
(PARK 21 W)
CLIENT
CITY OF ADELAIDE

SCALE
1: 200 @ A3
ISSUE DATE
20/04/2022
REVISION
E





EAST ELEVATION



WEST ELEVATION



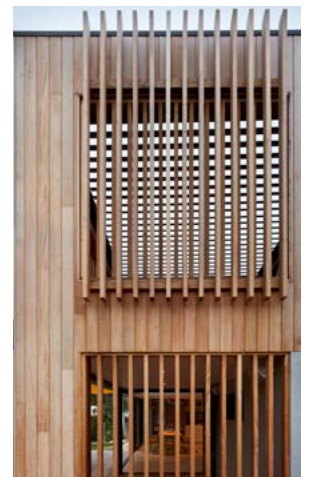
RIBBED METAL
CLADDING



BRICKS



STEEL



TIMBER

MATERIALS



SOUTH ELEVATION



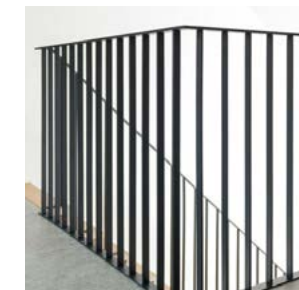
NORTH ELEVATION



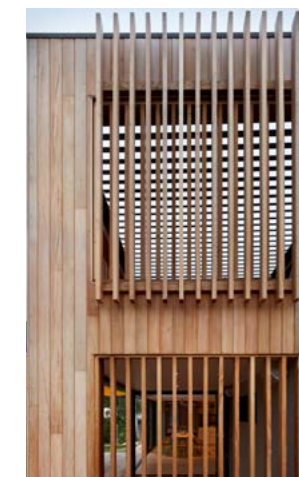
**RIBBED METAL
CLADDING**



BRICKS

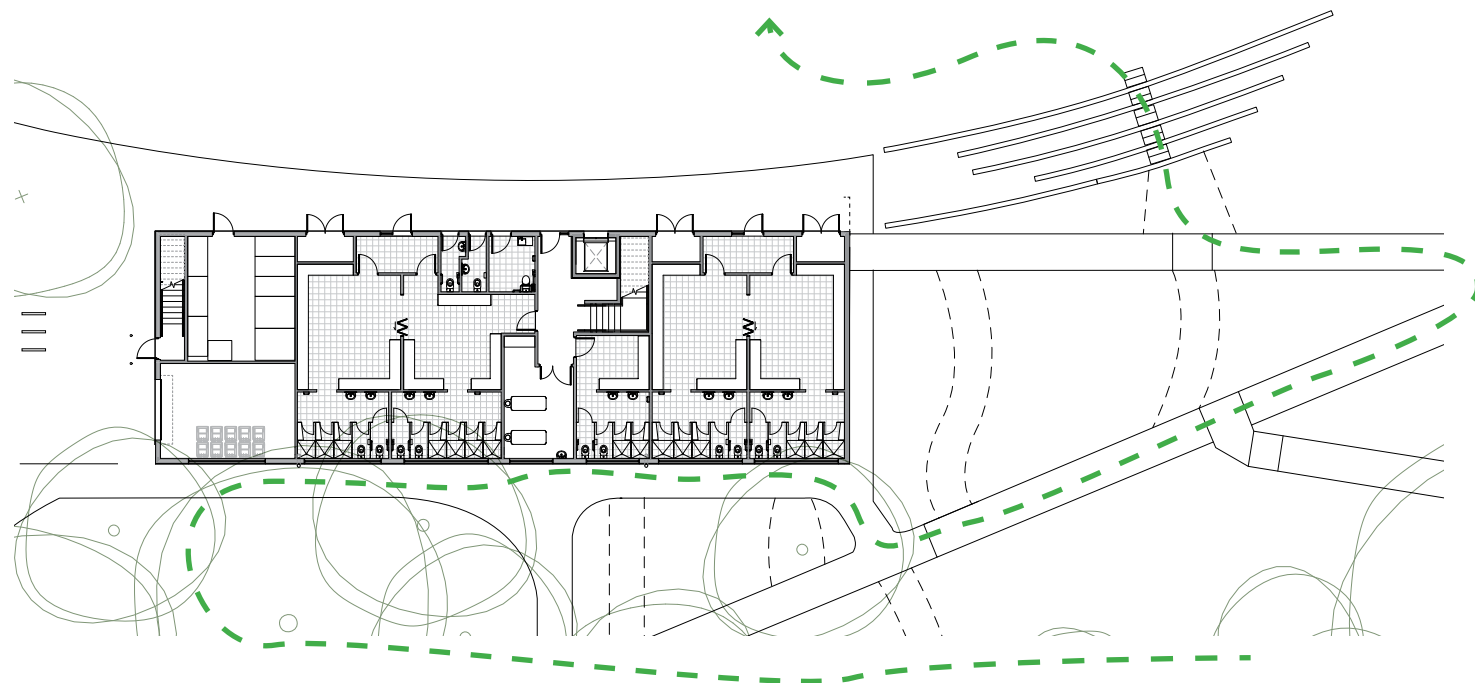


STEEL



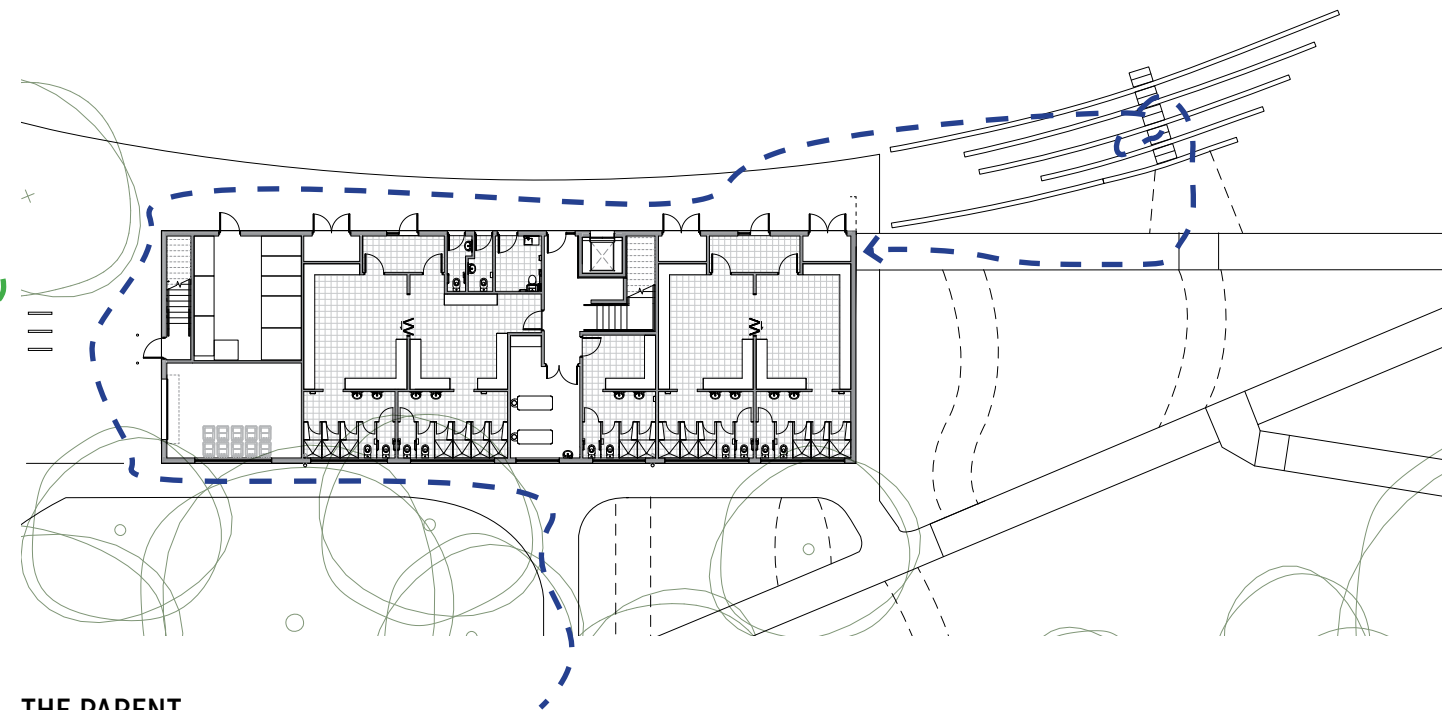
TIMBER

MATERIALS



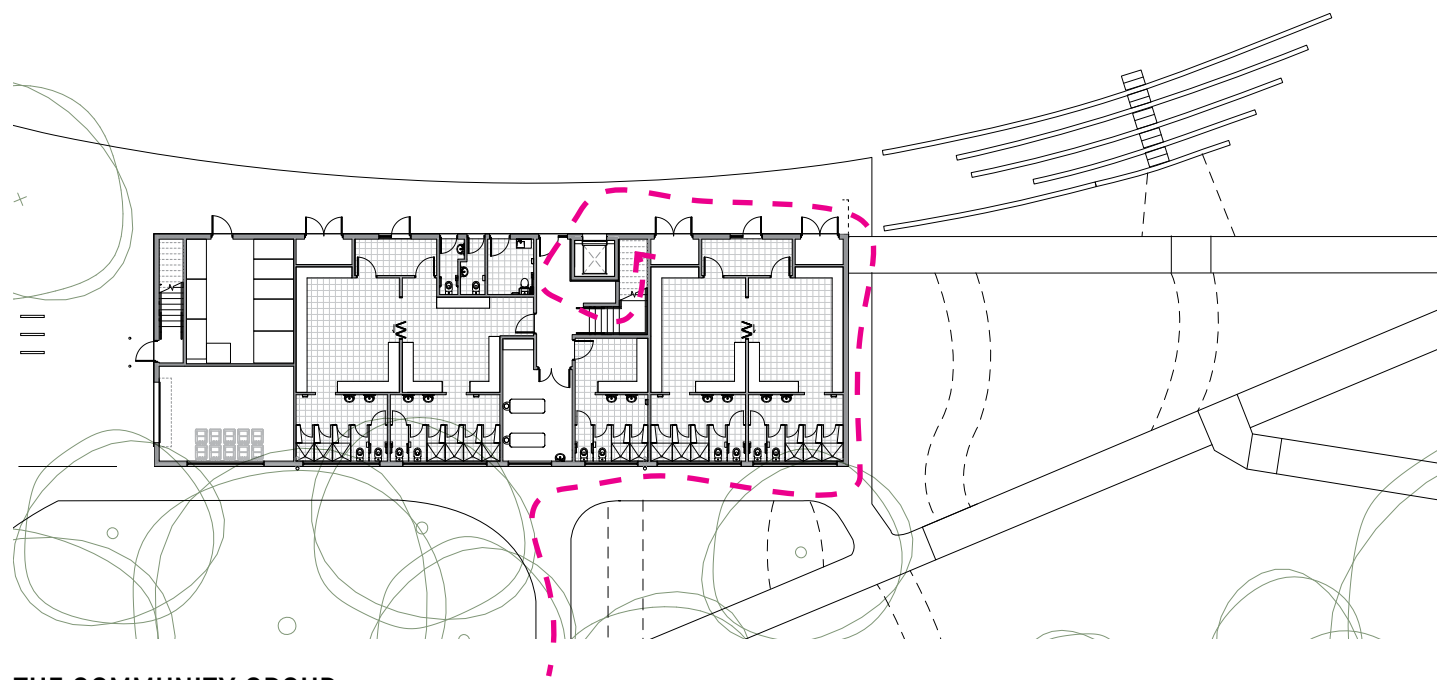
THE PARKLANDS STROLLER

"I wonder what's going on over here? Hmm, you know what, I might cut across the oval today and get some fresh air".



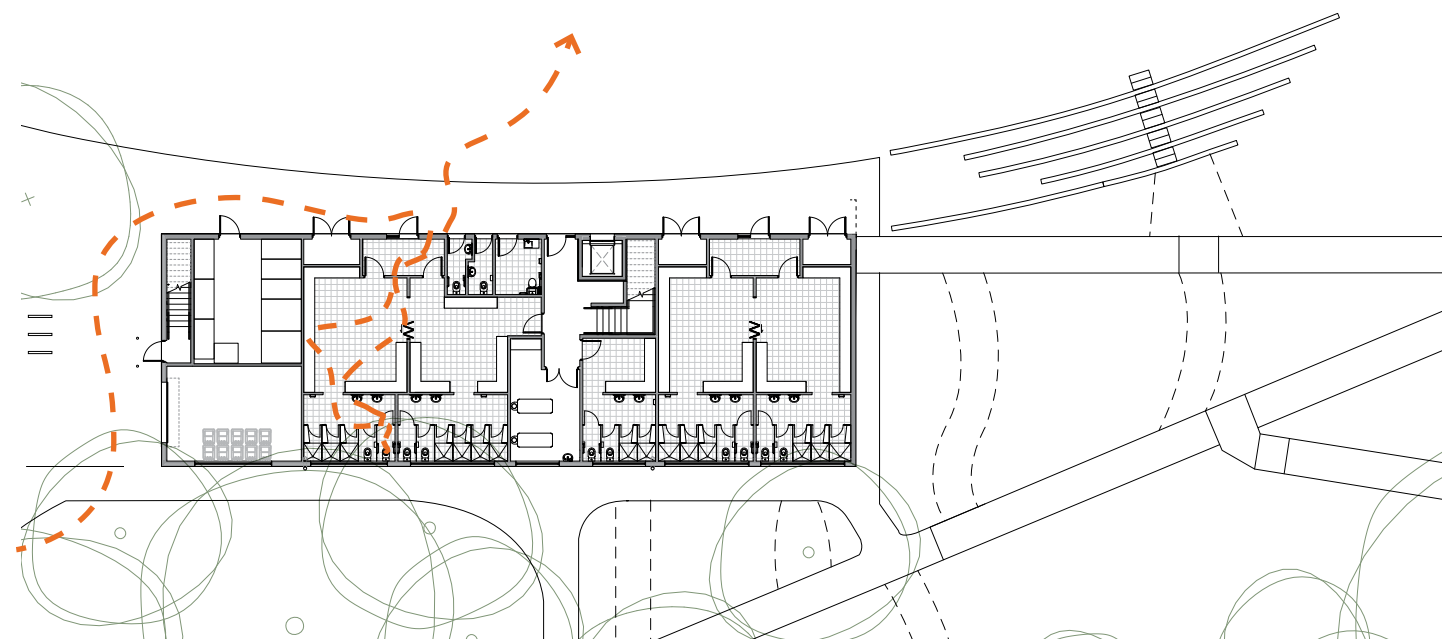
THE PARENT

"Come on Lucy, get in there..! Don't let them push you around like that! ... ahh, I need a drink".



THE COMMUNITY GROUP

"Good luck with the presentation tonight Singh - you're going to do just fine".

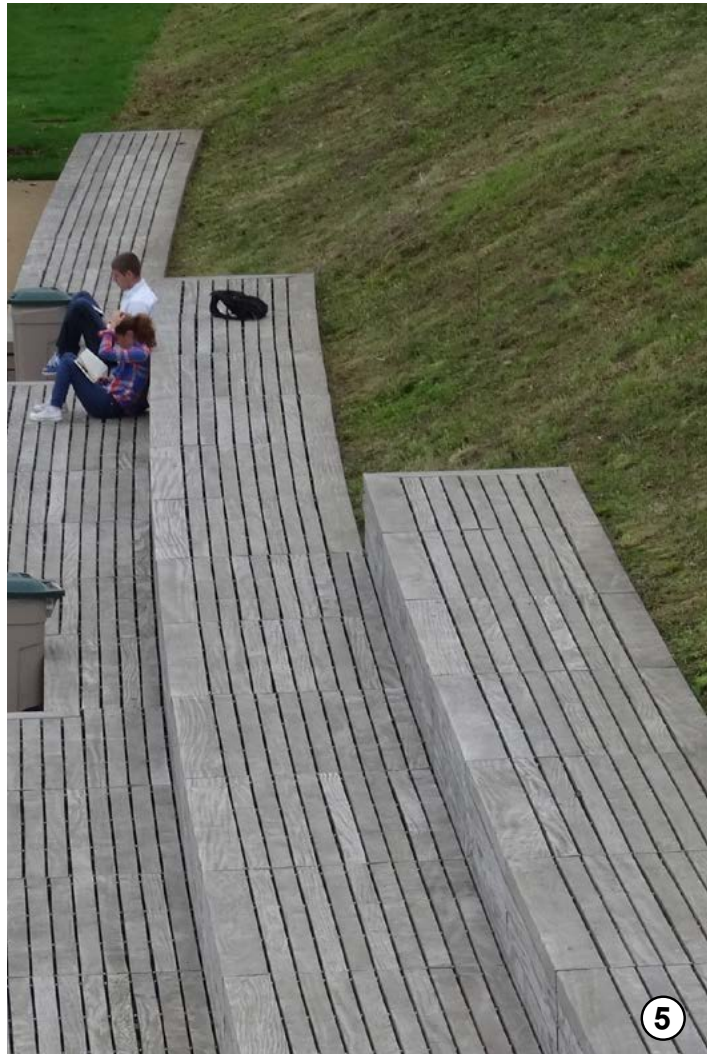


THE FOOTBALL PLAYER

"Football is life!"

1. NEW CLUBROOMS
2. RAMP ACCESS TO BUILDING WITH ACCESSIBLE 1:20 GRADIENT (UP TO 3.0M)
3. ENTRANCE BRIDGE TO BUILDING WITH BALUSTRADE
4. AMPHITHEATRE STEPS (0.45M) WITH QUICK STEPS
5. GRASSED EMBANKMENT
6. STEPPED ACCESS (10 STEPS)
7. LANDSCAPED EMBANKMENT WITH SHRUB PLANTING
8. INFORMAL PATH ACCESS
9. LANDSCAPED ENTRANCE AND URBAN ADDRESS WITH DIRECT ACCESS PATH
10. ACCESSIBLE ON STREET PARKS (2)
11. GARDEN BEDS WITH OPPORTUNITIES FOR WSUD
12. PERMEABLE PAVED OPEN SPACE
13. ACCESS ROAD FOR DROP OFF AND SERVICE VEHICLES (CRUSH ROCK SURFACE AND NO KERBS)
14. CURVED SEATING WALLS
15. UPGRADE PLAYING FIELDS
16. BIKE RACK AND DRINKING FOUNTAIN
17. EXISTING LIGHTING COLUMN
18. REMOVAL OF 4 TREES EUCALYPTUS SP. (RED DASHED LINE)





1. GRASSED AMPHITHEATRE STEPS
2. PERMEABLE PAVING
3. AMPHITHEATRE STEPS WITH INTEGRATED PUBLIC ART
4. LANDSCAPE MOUNDING
5. BLEACHERS AND GRASS EMBANKMENT
6. NATIVE PLANTING TO CLUBROOM ENTRANCE



BOTANICAL NAME - COMMON NAME

1. *Austrodanthonia caespitosa* - Wallaby Grass
2. *Cymbopogon ambiguus* - Lemon Grass
3. *Dianella revoluta* - Black-anther Flax Lily
4. *Ficinia nodosa* - Knobby Club-rush
5. *Lomandra multiflora* ssp. *dura* - Hard Mat-rush
6. *Poa poiformis* - Coast Tussock Grass



BOTANICAL NAME - COMMON NAME

1. Banksia marginata - Silver Banksia
2. Scaevola crassifolia - Thick-leaved Fan Flower
3. Carprobrotus rossii - Karkalla
4. Microseris lanceolata - Yam Daisy
5. Wahlenbergia stricta - Austral Bluebell
6. Calcephalus citreus - Lemon beauty heads



BOTANICAL NAME - COMMON NAME

1. Eucalyptus microcarpa – Grey Box
2. Eucalyptus porosa – Mallee Box
3. Eucalyptus camaldulensis Red Gum
4. Pittosporum angustifolium – Weeping Pittosporum
5. Acacia pycnantha – Golden Wattle
6. Allocasuarina verticillata – Sheoak

















GRIEVE
GILLET
ANDERSEN

ARCHITECTURE
INTERIORS
URBAN DESIGN
HERITAGE

243 Pirie Street Adelaide
South Australia 5000

T +61 8 8232 3626
admin@ggand.com.au

ggand.com.au